

Decorating ideas from a beach house renovation

realiving

Naturally Beautiful

Resort wares
Shop our edit
of *hotel inspired*
interior buys

70+ pages of
ENCHANTING HOMES THAT
BRING THE OUTDOORS IN

Your guide to
family-friendly
flooring products

Green Peace



Tasked with turning a problematic old apartment into a home for his family, an architect in Italy looked outdoors for inspiration

photography monica spezia | production & styling francesca sironi | words dan f. stapleton

Dine a dozen Such a long dining room could have felt austere, but the cream-coloured Leda chairs by Miniform and curvy dining table that architect Fabio Fantolino designed for Thonet soften the space. The down lights, David Pompa pendant lamps and globe sconces by Claudia Melo for UTU allow for varying degrees of illumination. **The right angles** Contrary to its name, this bookcase (opposite) displays design objects rather than reading materials. →



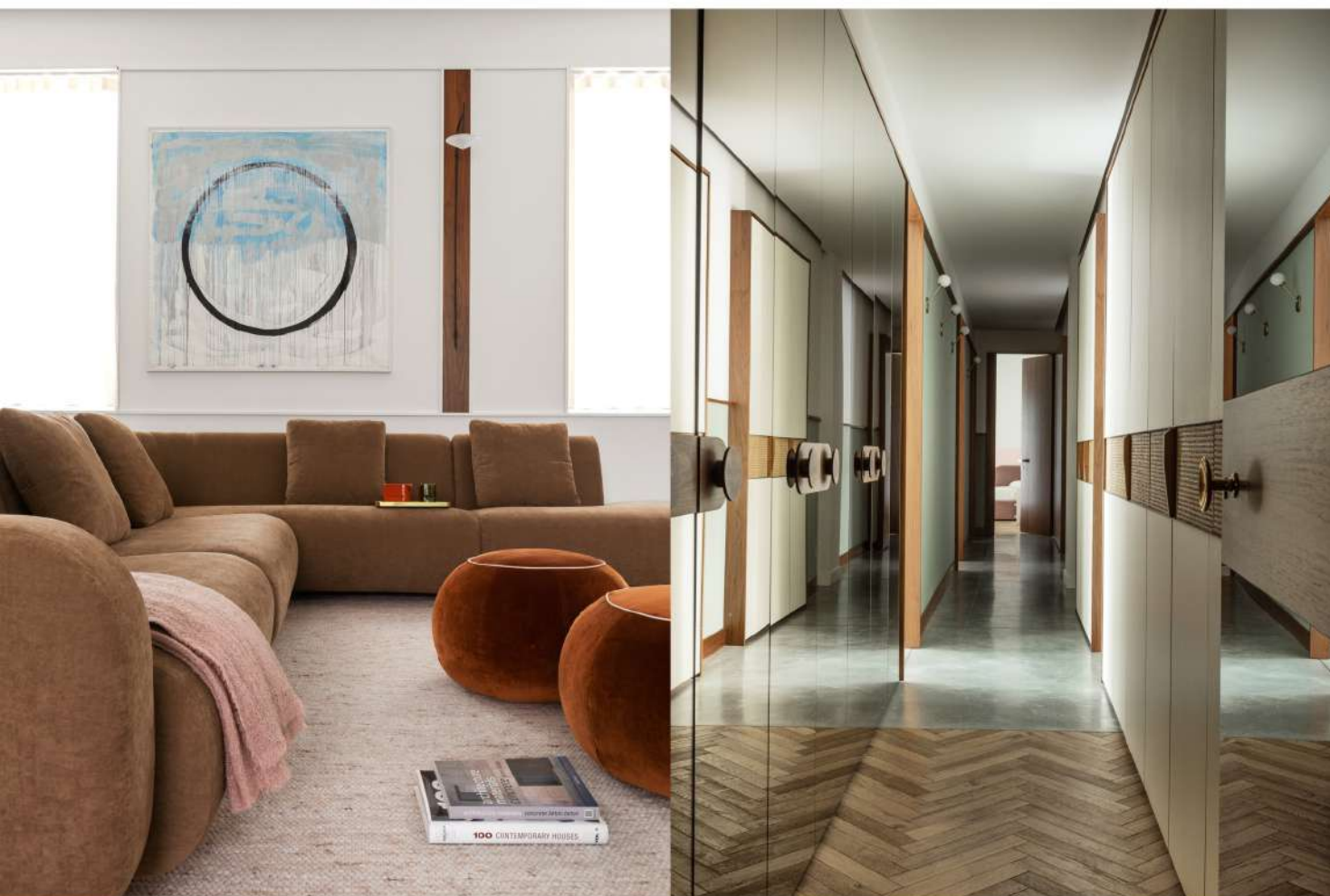


RAIN-SOAKED TURIN owes much of its charm to Alessandro Antonelli, the architect who designed significant religious buildings there in the mid-1800s. Antonelli created palazzos, too, some of which have since been subdivided. When present-day architect Fabio Fantolino walked through this garden apartment in one of Antonelli's grand residences a few years ago, he knew immediately that he wanted to live here with his family. "There was an energy," he says. But there was also a problem: the space had previously been used as an office. "The layout was a disaster, the spaces divided with plexiglass walls," Fabio says. He quickly got to work.

BACK TO BASICS Fabio removed all the non-structural walls and designed a new layout that positioned as many rooms as possible against the side of the building overlooking the garden. "It was my starting point," he says. "I liked the idea that the garden was accessible from all rooms and could become the open-air extra room in summer." He enlarged the garden-facing windows, taking advantage of the high ceilings, and laid a polished concrete floor to reflect the light. Interior archways nod to Antonelli's religious heritage and enhance the sense of flow.

TREE CHANGE With the garden on his mind, Fabio gravitated towards various shades of green. "It's the best colour to make a connection between all the other colours, which gives you more freedom," he says. Brown elements enter via the wood panelling and upholstered furniture. "Wood gives a space personality and elegance," Fabio says. "And it connects you back to nature."

SOFT CENTRE Fabio knew the rooms with high-ceilings and concrete floors could create a cold feeling on rainy days, so he channelled a '70s vibe throughout, typified by soft tones, velvety fabrics and plenty of lamps. In places, stained glass thickens the light. "Glass is a very technical and discreet material," he says. "I wanted it in petrol blue and light smoky brown to make it the protagonist." Although the glass tones are cool, the overall scheme feels balanced. Says Fabio: "It feels like a new beginning." 🗨

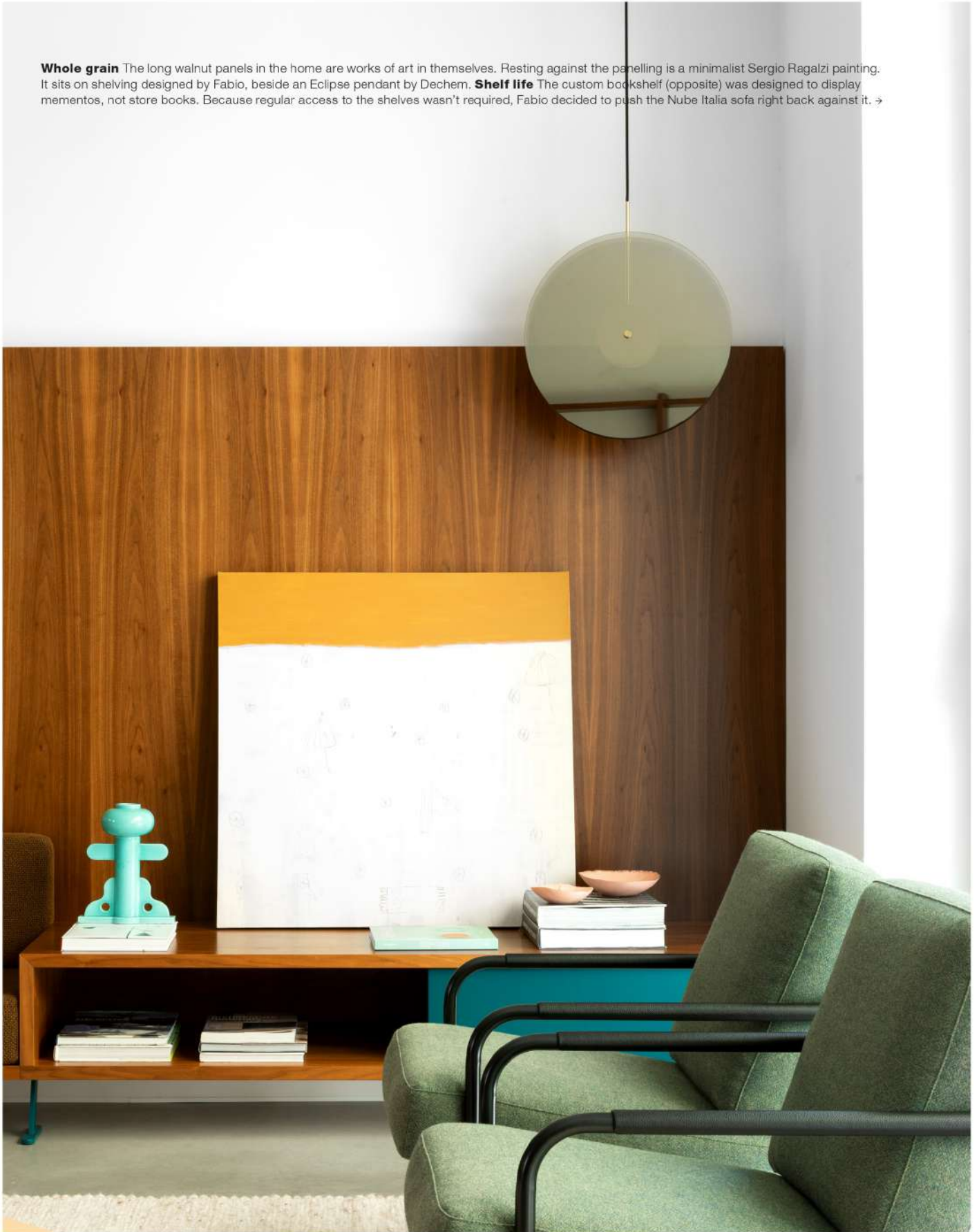


who lives here?

Architect Fabio Fantolino, with his wife Laura
and their two daughters Bianca and Letizia.
@fabiofantolino

FROM FAR LEFT **Corner office** Fabio made use of a narrow section of wall in the living room by custom-designing a desk for it. The Diverge chair from Miniforms and Volta wall lamp by Nahtang Design for Estiluz are similarly compact. **Book nook** Fabio, his wife Laura and their two children are pictured on a low bench seat that Fabio designed. It's one of many spots where the kids can curl up to read or do homework. On the shelf beside it is a sculpture vase by Nathalie Du Pasquier. In the foreground, a coffee table designed by Fabio sits atop a Sindar-KA rug by Tisca Italia. **Sofa, so good** Fabio and Laura wanted an oversized sofa that fit the room and harmonised with their art collection and personal aesthetic, so Fabio designed one for Nube Italia. The girls watch TV on the Geo poufs by Saba. On the far wall, a Paolo Assenza painting makes a statement. **Living large** Fabio added floor-to-ceiling mirrors to the narrow hallway that runs the length of the apartment, making it seem wider and brighter. →

Whole grain The long walnut panels in the home are works of art in themselves. Resting against the panelling is a minimalist Sergio Ragalzi painting. It sits on shelving designed by Fabio, beside an Eclipse pendant by Dechem. **Shelf life** The custom bookshelf (opposite) was designed to display mementos, not store books. Because regular access to the shelves wasn't required, Fabio decided to push the Nube Italia sofa right back against it. →







Pride of place The kitchen has the highest ceiling in the apartment, making it an architect's dream. Fabio custom-designed it entirely, using Calacatta marble for the worktops and Lino by Yonoh tiles from Harmony Inspire for the splashback. The tapware from Bellota and Nemo wall lights fit in perfectly. **Play time** Bright red and light pink garden furniture by Paola Lenti establishes the mood in the garden (opposite), which was designed by landscape architect Cristiana Ruspa. A carafe and glasses from LSA sit on a Setax tray.

how to accentuate high ceilings

1

Designing your home? Archways and curved doors and windows draw the eye upwards.

2

Use darker tones down low and light ones up high, as seen here in Fabio's kitchen.

3

Show-off the height of your tallest rooms and install elongated pendant lights. →





Softly, softly The combination of green and grey creates a calm atmosphere in the main bedroom, which features a Fabio-designed bedhead, bedside table and console. A Buddy armchair by Pedrali and Flowerpot lamp by Verner Panton for &Tradition add a playful touch. **Form-idable** The artwork is by Paolo Grassino and the vases are from Bianchodichina (below, left). **Self care** Fabio designed the en suite vanity, adding slabs of Calacatta marble, Bellosta tapware and Fabbian wall lights (below, right). **Girl zone** Fabio and Laura have an en suite, so they decided to create a fun environment for Bianca and Letizia in the main bathroom (opposite). The pink tiles are from Ceramica Bardelli, the tapware is Bellosta and the linen towel is from Society Limonta.



style tip Two-tone walls are an effective way to add personality to a space without overwhelming it →



Gimme shelter With high walls on two sides, the outdoor dining area is protected from all but the wildest weather. Nolita chairs from Pedrali and a Palumbo Legnami bench tuck under the Palumbo Legnami table. Vases by Stefania Loschi.

shop it! Explore shape and tonality with a rich palette and '70s-style designs



1 Ambra pendant light, about \$890*, David Pompa. **2** 2.02 pendant light, about \$1073*, Studio Haos. **3** *All Country* art print by Sarah Kelk (59.4cm x 42cm), \$260 for unframed, Modern Times. **4** Andorra rug in Terrazzo (1.7m x 2.4m), \$1335, Armadillo. **5** Miniform 'Diverge' chair, \$1764, JRF. **6** Beret storage box in Caramel, \$189 for small, Loam. **7** Arch gas lift bedframe, \$1399 for queen, Brosa. **8** &Tradition 'Flowerpot VP3' table lamp in Beige Red, \$665, Cult. **9** Tekla whip-stitched wool blanket, \$258, Matchesfashion. **10** Hay gold-coloured large tray, \$41, Cult. **11** Muse sofa in Dune, \$2990, Sarah Ellison. **12** Georgia bowl in Dark Peach, \$24 for medium, Domayne. **13** Broste Copenhagen 'Tenna' shelf in Dusty Peach, \$323, Amara. **14** Neff built-in double oven, \$3399, Harvey Norman. **15** Flos 'IC' wall and ceiling light in Red Burgundy, \$789, Amara.



Colours and finishes

FROM LEFT Ulf Moritz 'Casino' fabric in 0003, from \$300 per sq m, Kvadrat. Calacatta marble, from \$800 per sq m, CDK Stone. Blends ceramic subway tiles in Blush, \$119 per sq m, Perini. Diva mosaic wall tiles in White Gloss, from \$250 per sq m, Classic Ceramics.